

**dimensions**

- (A) Height without counterweight . . . . . 2159 mm/7'1"
- (B) Height of top of counterweight frame . . . . . 2286 mm/7'6"
- (C) Height to top of stack . . . . . 2946 mm/9'8"
- (D) Minimum shipping width counterweights removed . . . . . 2946 mm/9'8"
- (E) Width with fixed counterweight . . . . . 3023 mm/9'11"
- (F) Width, adjustable counterweight retracted . . . . . 3200 mm/10'6"
- (G) Width, adjustable counterweight extended . . . . . 4343 mm/14'3"
- Overall length . . . . . 3835 mm/12'7"

**pipelaying equipment**

**Live power:** Continuous power to pipelayer winches, independent of torque converter.

**Winch transmission:** Sliding gear, built by Caterpillar. 3 speeds for raising, 1 for lowering.

**Drums:** Operated independently or simultaneously.

	Load	Boom
Drum diameter . . . . .	216 mm/8.5"	216 mm/8.5"
Brake diameter . . . . .	457 mm/18"	363 mm/14.3"
Length (inside flanges) . . . . .	305 mm/12"	127 mm/5"
Capacity . . . . .	115 m/510'	35 m/115'
Cable size . . . . .	16 mm/5/8"	16 mm/5/8"

Hook speed (bare drum):

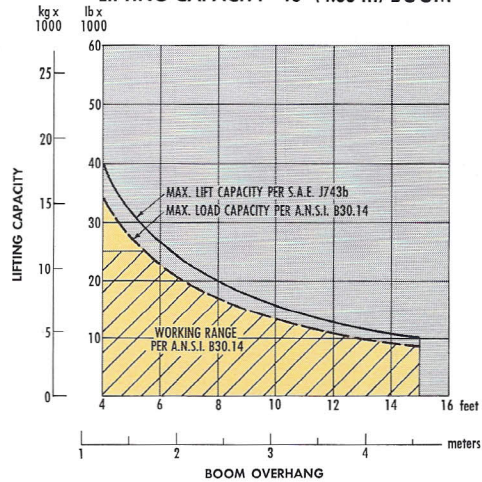
Raise:	3-part load line		2-part load line	
	M/min	FPM	M/min	FPM
First . . . . .	11	36	16.5	54
Second . . . . .	19.5	64	29.3	96
Third . . . . .	80.5	264	120.7	396
Lower . . . . .	11.6	38	17.4	57

**Clutch:** Single plate, 290 mm/11.4" diameter, friction type. Connected to winch transmission by roller chain.

**Boom:** I-beam section.  
 Standard length . . . . . 4572 mm/15'  
 Optional length . . . . . 5486 mm/18'

**ADJUSTABLE COUNTERWEIGHTS**

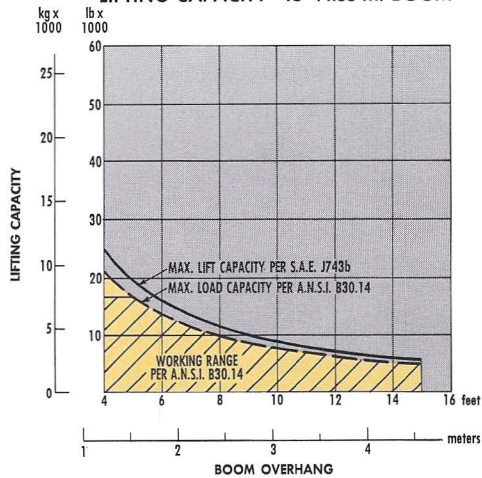
**LIFTING CAPACITY\* 15' (4.55 m) BOOM**



\*Specified Equipment:  
 16 mm/5/8" dia. wire rope 15 150 kg/33,400 lb minimum breaking strength,  
 3 part load line,  
 3 part boom line,  
 2994 kg/6,600 lb of counterweights extended.

**FIXED COUNTERWEIGHTS**

**LIFTING CAPACITY\* 15' (4.55 m) BOOM**



\*Specified Equipment:  
 16 mm/5/8" dia. wire rope 15 150 kg/33,400 lb minimum breaking strength,  
 2 part load line,  
 3 part boom line,  
 1134 kg/2500 lb of counterweights.

**service refill capacities**



	Liters	U.S. Gallons
Fuel tank . . . . .	246	65
Cooling system . . . . .	34	9
Engine crankcase . . . . .	27.4	7.25
Transmission, steering clutches and brakes . . . . .	77	20.5
Final drives (each) . . . . .	11.4	3

**weights (approximate)**



	Kg	Lb
Chassis only . . . . .	9390	20,700
Total shipping with:		
No counterweight . . . . .	12 700	28,000
Fixed counterweight . . . . .	13 600	30,000
Adjustable counterweight . . . . .	15 650	34,500

Materials and specifications are subject to change without notice.