

**T H E S U L L A I R
A I R C O M P R E S S O R**

900XHDL

900 CFM AT 350 PSIG—425 L/S AT 24 BAR

1150XHDL

1150 CFM AT 350 PSIG—543 L/S AT 24 BAR

900XHHDL

900 CFM AT 500 PSIG—425 L/S AT 34.5 BAR

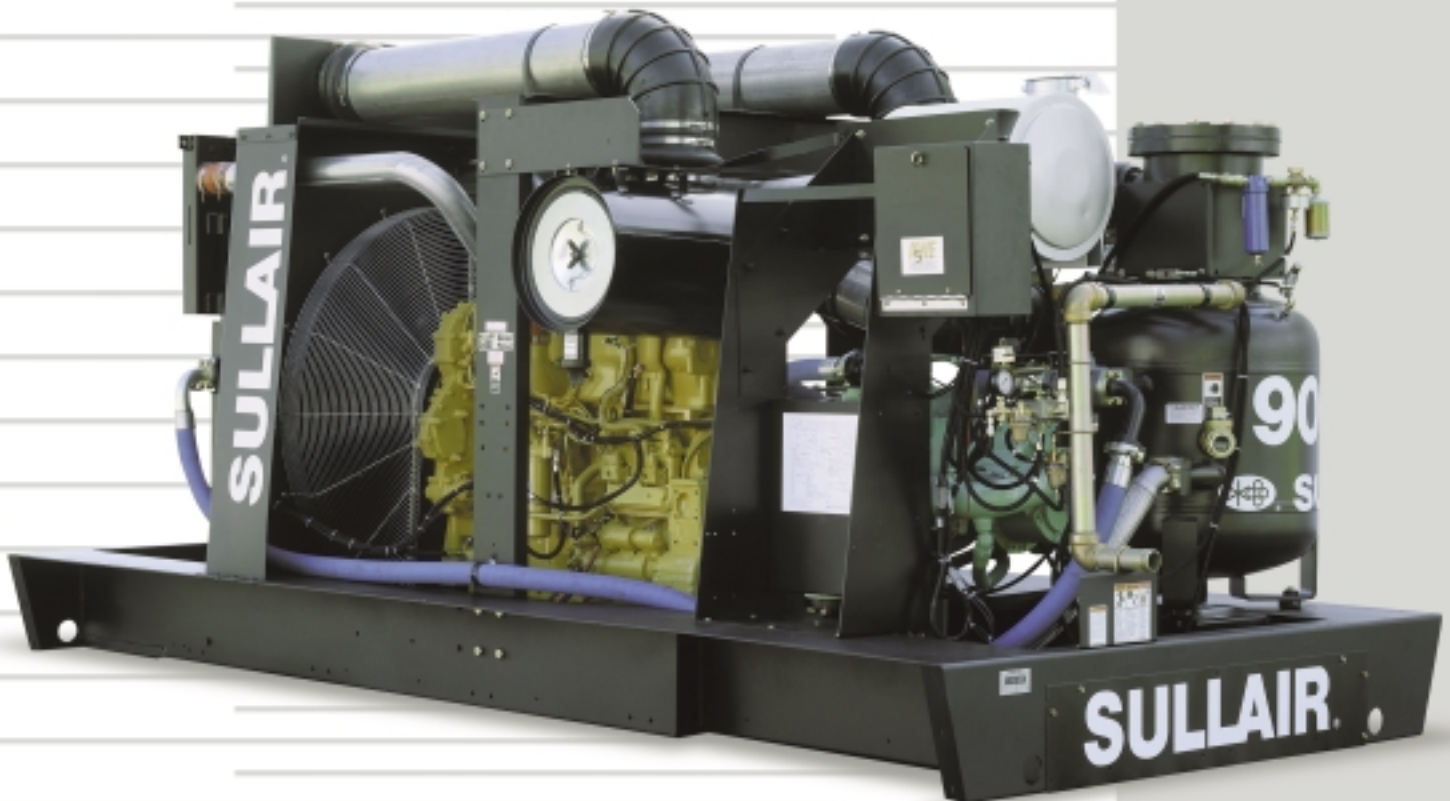
1150XHHDL

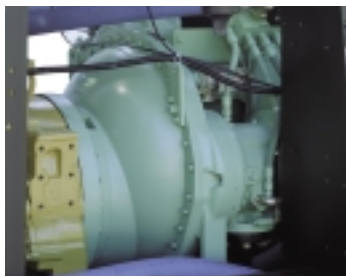
1150 CFM AT 500 PSIG—543 L/S AT 34.5 BAR

1350XHDL

1350 CFM AT 350 PSIG—637 L/S AT 24 BAR

- ROTARY SCREW COMPRESSOR
- 0 TO 100% CAPACITY CONTROL
- ELECTRONIC ENGINE CONTROL
- IDLE WARM-UP VALVE
- WEATHER-PROOF INSTRUMENT PANEL—
 - MECHANICAL GAUGES
 - DIAGNOSTIC SHUTDOWN INDICATORS
 - CIRCUIT BREAKER
 - ENGINE MONITOR SYSTEM
- HIGH/LOW PRESSURE SELECTOR VALVE
- PROTECTIVE SHUTDOWN SWITCHES
- TWO-STAGE AIR FILTERS WITH SAFETY ELEMENT
- AWF COMPRESSOR FLUID

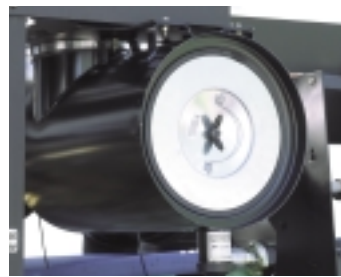




Rotary Screw Compressor
Heavy Duty, field-proven two-stage air-end



Weatherproof Instrument Panel
Equipped with top quality gauges, circuit breaker, idle warm-up valve, diagnostic shutdown indicator system, and engine monitor system.



Two-Stage Filters with Safety Elements
Provides maximum protection for engine and compressor, thereby lengthening equipment life.



Sullair AWF Compressor Fluid
Improved hot and cold weather lubrication. Longer compressor fluid life. Extended air-end warranty.

DESIGNED FOR TOTAL ACCESSIBILITY AND RELIABILITY

Open Frame Design

Designed for stationary applications. Heavy-duty frame includes mounting feet. Unit is provided without on-board fuel tanks.

0 to 100% Capacity Control

Automatic inlet valve and unloaded starting.

Electronic Engine Control

Electronic controls include a diagnostic capability and an onboard computer that can record historical events when engine is running.

Readout screen on the instrument panel where the diagnostic information can be obtained.

Two-Stage Dry Type Air Filters with Safety Element

Positioned to draw cool ambient air.

Weather Proof Instrument Panel

Hinged, padlockable cover.

Mechanical gauges are used for air pressure, compressor discharge temperature, air filter maintenance indicators, and separator maintenance indicator.

Engine Monitor System will display: engine hours, engine RPM, voltage, coolant temperature, engine oil pressure, percent load, fuel rate and more.

Other instrumentation include, measured shot ether start aid, fuel level gauge, circuit breakers, and engine warning and fault code lights.

High/Low pressure selector valve allows dual pressure capability without making mechanical adjustment.

Diagnostic Shutdown Indicator System

For compressor: High discharge temperature. For additional diagnostics, by using a Caterpillar service tool that can retrieve recorded engine parameters (power, engine temperature...), the service technician can determine what the engine was doing before, during and after system malfunction.

Protective Shutdown Switches

Low engine oil pressure, high engine water temperature, low water level, high compressor temperature.

A protective circuit also prevents starter engagement when machine is operating.

AWF Compressor Fluid
All-weather, all-climate fluid.

Air End Warranty

2 year standard warranty.
5 year or 10,000 hour warranty when continuously serviced at the recommended intervals with Sullair AWF Compressor Fluid and filters.



This product is manufactured to the highest quality standards in an ISO 9001 certified quality system.

SULLAIR'S OPTIONS ALLOW YOU TO CUSTOMIZE THE COMPRESSOR TO MEET YOUR SPECIFIC REQUIREMENTS WITHOUT PAYING FOR ITEMS YOU DO NOT NEED.

Block heater
Fuel Tank (Export only)

Special color paint
Oil Field Skid

Service Valve
Aftercooler / Water Separator

SPECIFICATIONS, WEIGHTS AND DIMENSIONS—SULLAIR 900XH, 900XHH, 1150XH, 1150XHHDL, 1350XHDHDL PORTABLE COMPRESSOR

Delivery @ Rated Pressure	Rated Pressure psig (bar)	Pressure Range psig (bar)	Designated Model	Weight (wet) lbs	Length in (mm)	Width in (mm)	Height in (mm)
*900 cfm (425 L/S) (25.5 m ³ /min)	350 (24)	175–350 (12–24)	Open Frame	12500	177.1 (44498)	87.5 (2222)	89 (2261)
**1150 cfm (543 L/S) (32.6 m ³ /min)	350 (24)	175–350 (12–24)	Open Frame	12500	177.1 (44498)	87.5 (2222)	89 (2261)
**900 cfm (425 L/S) (25.5 m ³ /min)	500 (34.5)	250–500 (17.2–34.5)	Open Frame	12500	177.1 (44498)	87.5 (2222)	89 (2261)
***1150 cfm (543 L/S) (32.6 m ³ /min)	500 (34.5)	250–500 (17.2–34.5)	Open Frame	12500	177.1 (44498)	87.5 (2222)	89 (2261)
***1350 cfm (637 L/S) (38.2 m ³ /min)	350 (24)	175–350 (12–24)	Open Frame	12500	177.1 (44498)	87.5 (2222)	89 (2261)

Engine Make	Engine Type	Engine Model	Displacement cu in (cc)	Cylinders	Cycles	Bore and Stroke in (mm)	Rated Speed rpm	Rated Power hp (kW)
*Caterpillar	Diesel	C-15 ATAAC	893 (14.6)	6	4	5.40 X 6.50 (137 X 165)	1800	450 (336)
**Caterpillar	Diesel	C-15 ATAAC	893 (14.6)	6	4	5.40 X 6.50 (137 X 165)	1800	525(392)
***Caterpillar	Diesel	C-16 ATAAC	966 (15.8)	6	4	5.50 X 6.75 (140 X 171)	1800	630(470)



www.sullair.com

SULLAIR CORPORATION, 3700 East Michigan Blvd., Michigan City, IN 46360 Telephone: 1-800-SULLAIR or 1-219-879-5451 Fax: 1-219-874-1504

SULLAIR EUROPE, Zone des Granges, BP 82, 42602 Montbrison, Cedex, France, Telephone: (33) 4.77.96.84.70 Fax: (33) 4.77.96.84.99

SULLAIR ASIA LTD., 74 Joo Koon Circle, Jurong, Singapore 629093, Telephone: (65) 861-1211 Fax: (65) 861-2967 Telex RS25117

SULLAIR ASIA, 1 Sullair Road, Chiwan, Shenzhen, China 518068, Telephone: (86) 755-6853477 or (86) 755-6851686 Fax: (86) 755-6853473

SULLAIR TAIWAN LTD., 3F-1., No.248, Chung Shan Road, Lin-Kou Hsiang, Taipei Hsien, Telephone: (02)2601-3500, Fax: (02)2601-3032

SULLAIR ARGENTINA, Goncalves Dias 1145, 1276 Buenos Aires, Argentina, Telephone: 541-303-0621, Fax: 541-303-0626

SSL-1152C Specifications subject to change without notice. © Copyright 2004 Sullair Corporation. All rights reserved. EA/02/04/7.5