



Pipeline Equipment

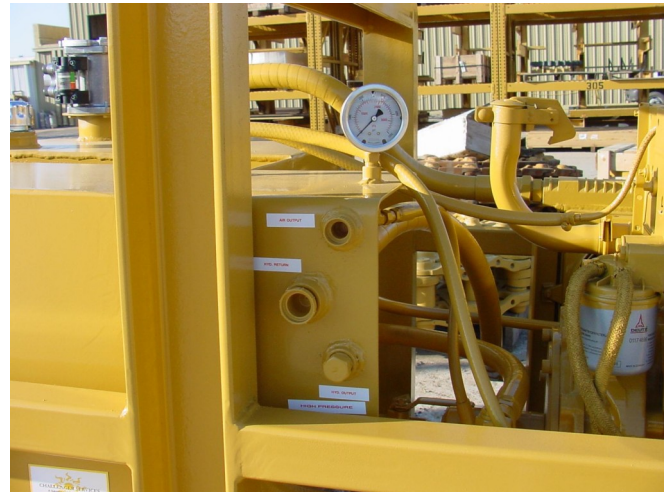
Challenger Hydraulic Power Unit



Standard Components

- **Duetz Model F2L1011 Diesel Engine**
Air cooled/four cycle
20 h.p. @ 2,650 rpm
Electric Start
Auto Idle Down
- **Parker Piston Type Hydraulic Pump**
20 gpm capacity
Self compensating for load.
- **Hydraulic Oil Tank**
61 gallon capacity
Strainer on suction side.
- **Parker type Oil Filter**
- **Oil Cooler—oil to air**
- **Skid Mounted**
- **Full Cage with Lifting Bale**

Pictured with optional Quincy 206 air compressor.



Location for hydraulic and air hose connections.

Dimensions

Length	72 inches (1,800 mm)
Width	36 inches (914 mm)
Height	36 inches (914 mm)
Weight	2,400 lbs. (1,088 kg.)

Options

Cat Engine	Trailer Mounting
Hatz Engine	3 Line Connection
Air Compressor	

CHALLENGER SERVICES
4530 South Jackson Avenue
Tulsa, Oklahoma 74107 USA

Phone: (918) 447-0055
Fax: (918) 447-0067

email: sales@challengerservices.com
www.challengerservices.com